



SEHBAC COMMERCIAL

1 Olympus Close
Ipswich, IP1 5LJ

Telephone: 01473 467171

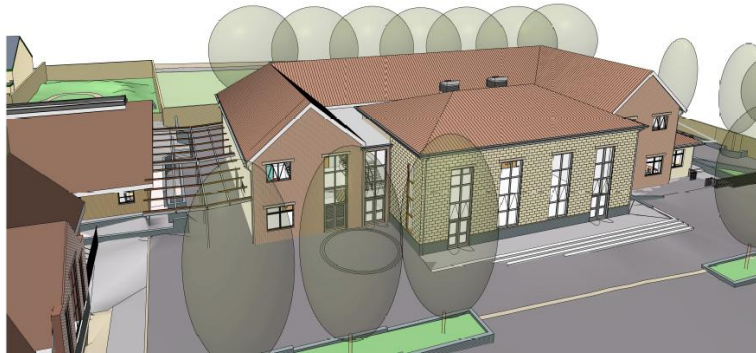
Facsimile: 01473 462240

email: sales@sehbaccommercial.co.uk

Commercial

Press Release

SEHBAC COMMERCIAL SECURE NORTH EALING PRIMARY SCHOOL WILLMOTT DIXON CONTRACT



(3D illustration of the new North Ealing Primary School building)

SEHBAC Commercial, the commercial property arm of the SEH Construction Group, has secured the external window and door supply contract on a new build extension being carried out at North Ealing Primary School by Willmott Dixon Construction.

SEHBAC Commercial's aluminium product range is constructed in house at SEHBAC Commercial using material from SAPA Aluminium and has satisfied the crucial safety, energy efficiency and price criteria put down by Willmott Dixon Construction, one of the industry's most recognizable brands for major construction projects across England and Wales.

The project at north Ealing Primary School involves the creation of a brand new, two-storey school building providing state of the art facilities for the pupils. An old, dilapidated building was demolished to prepare for the new building and pupils have been moved to temporary mobile unit classrooms while the construction is underway. The new building is due for completion on Christmas Eve 2010.

Iain Charnley, Assistant Project Surveyor at Willmott Dixon Construction Limited: "I have worked with SEHBAC Commercial on previous projects and once again they have proved to most competitive supplier, providing a flexible contract and the ideal product.



**SEHBAC COMMERCIAL**

1 Olympus Close
Ipswich, IP1 5LJ

Telephone: 01473 467171

Facsimile: 01473 462240

email: sales@sehbaccommercial.co.uk

Commercial

Press Release

Glen Swatman, managing director at SEHBAC Commercial: "We're very proud to be working for Willmott Dixon, one of the most respected companies in the field. We work on school projects and other commercial property contracts across the UK. The experience means we have a team of installers that is well-versed in the intricacies of working in a live school environment. It's gratifying to be able to contribute the best product to help the next generations in their learning environments."

SEHBAC Commercial will install aluminium casement, tilt and turn widows and commercial entrance doors.

Willmott Dixon Group is one of the UK's largest privately owned construction, housing, repair, maintenance and investment companies. The Group employs over 2,500 people across the country whose focus is to deliver outstanding results for clients from a wide range of sectors.

Editors' note:

SEHBAC Commercial manages commercial refurbishment projects for clients including government departments, local authorities, housing associations, schools, commercial contractors and property developers.

Together with Real World Energy Solutions (RWES), a division of SEHBAC Commercial that delivers business solutions focussing on energy efficiency and carbon emission reduction, SEHBAC Commercial offers a complete construction capability for customers. RWES focuses on helping organisations reduce their energy expenditure and carbon emissions through the implementation of energy efficiency measures and working with stakeholders to change their behaviour and promote a culture of efficiency and environmental awareness.

As SEHBAC Commercial's client portfolio continues to grow in the competitive commercial property market, the company is securing business thanks to high quality traditional PVC-u, aluminium and wood windows & doors, an experienced commercial team and a commitment to developing new solutions in tune with modern efficiencies and construction ideals.

Ends

Ref: SC270510/1

Date: May 2010

SEHBAC Commercial Media contact – Oliver McCrudden – 01621 892 814 – oliver@smapr.net

